

LEGEND:

- TO BE DEMOLISHED
- EXISTING WALL
- NEW CONCRETE BLOCK WALL/INFILL
- METAL STUD PARTITIONS; 30 MIN FIRE RATED NOMINAL 100MM THICK; 75C50 STUDS AT 600MM CENTRES; 77C50 CHANNELS AT 600MM CENTRES; TO EN 14195 STANDARDS; COVERED WITH ONE LAYER OF TAPERED EDGED WALLBOARD BOTH SIDES 12.5MM THICK; LAID BREAKING JOINTS; BUTT JOINTS FILLED AND TAPED; 3MM SKIM COAT BOTH SIDES; COMPRISING EXTRA DEEP FLANGE CHANNEL WIDTH TO SUIT VERTICAL STUDS; SCREWED TO AND INCLUDING 50MM HIGH TIMBER HEAD PLATE IN TOW LINES OF FIXING AT 600MM CENTRES; HEAD PLATE FIXED TO TIMBER JOISTS FLOOR COMPOSITE; FIXING STRAPS TO DETAIL: SOLE PLACE FIXED TO TIMBER JOISTS, ACOUSTIC INSULATION SEALANT TO CEILING AND FLOOR JUNCTION, BOTH SIDES TO MANUFACTURER'S INSTRUCTIONS; FIXING STRAPS TO DETAIL: EUROCLASS FIRE RATING, TO BS EN 13501-1; CONTINUOUS LINE OF FIRE INTUMESCENT STRIP TO TOP AND BOTTOM OF TIMBER HEAD;
- ANTIMICROBIAL SHEET PANNELLING; RIGID POLYVINYL CHLORIDE HOMOPOLYMER; TO MEET SI 454 AND 805 (FOOD HYGIENE); SATIN FINISH; 2.5MM THICK PANELS, WEIGHT 3.5KG/M2; FIRE RATED TO EN 13501 B-S3-DO AND BS 476 CLASS 1/0; HOT WELDED JOINTS; THERMOFORMED INTERNAL AND EXTERNAL CORNERS TO MANUFACTURER'S INSTRUCTIONS; FIXED TO PLYWOOD, POLYURETHANE ADHESIVE, 2KG/M2

BOARDING AND SHEETING TO WALLS, WINDOW REVEALS AND SOFFITS: WBP BONDED PLYWOOD; TO BS EN 1995 & CPD/CE COMPLIANT; 9MM THICK; LAID WITH STAGGERED JOINTS, TOUNGED AND GROOVED; LEVEL OR TO FALLS BS 6229-2003 AND SPRA DESIGN GUIDE; SHOT FIXED OR SCREWED WITH GALVANISED SCREWS TO GALVANISED STEEL TOP HAT CHANNELS, TO EN 14195, 25MM DEEP AT 600MM CENTRES, INCLUDING PERIMETER SUPPORTS, SHOT FIXED OR SCREWED WITH GALVANISED SCREWS TO EXISTING BLOCKWORK WALLS;

- (W01) 5No. Existing windows: 550 x 550mm high; top hung opening units (UNIT 1 to 5 West Elevation); fix and clean as required
- (W02) 5No. Composite windows: overall opening (including frame) 2735 x 535mm high; top hung opening units; (UNIT 1 to 5 West Elevation)
- (W03) 6No. Composite windows: overall opening (including frame) 1100 x 800mm high; top hung opening units; (UNIT 1 and 5)
- (W04) 2No. Composite windows: overall opening (including frame) 550 x 550mm high; top hung opening units; (UNIT 1 and 5)

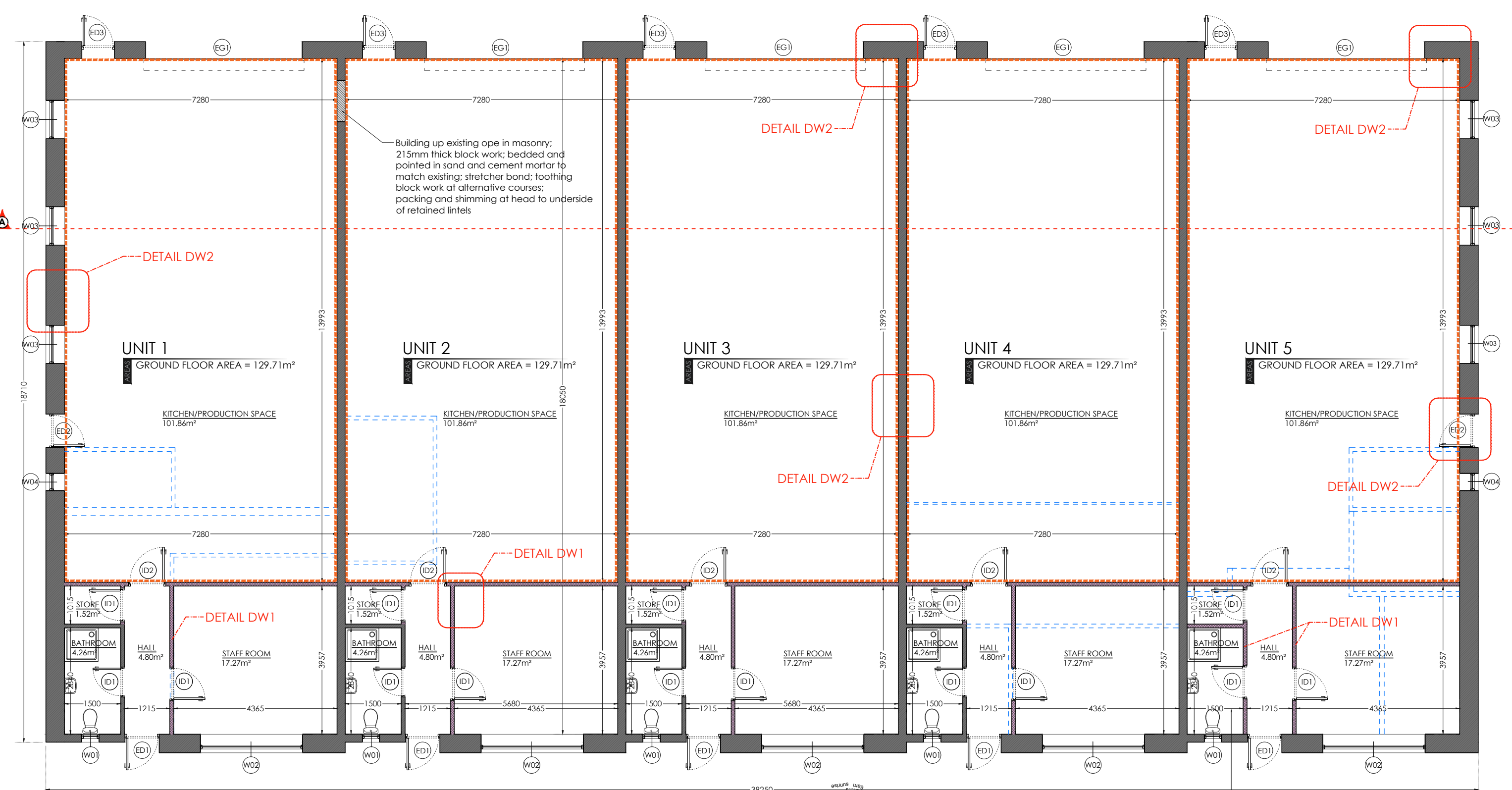
Design, fabricate, supply and install selected proprietary modular thermally-broken Low 'E' Argon (En=0.05, soft coat), to achieve minimum U-Value of 1.5W/m2k. Double Glazed polyester powder coated Aluminium window system to selected colour; sash restrictors 150mm to opening sashes; 32mm glazing - 6mm outer pane, 20mm argon filled cavity, (90/10 argon/air mix); 6mm inner pane; insulated coloured panel to match existing where appropriate; opaque glass to window panes as per architects drawing; high safety glazing to BS6262 to glazed window panes to regulations, to full pane if necessary; system gaskets to be sealed with EDPM non-cellular elastomer compound to BS734; manifistations to comply with Technical Guidance Document "M"; including all necessary ironmongery; including necessary opening sections as detailed on Architect's drawing; fixed in position with and including all necessary in glazing thermal broken passive ventilators as shown and in compliance with Technical Guidance Document "F"; certification to standards BS5368 - part 1 (Air Infiltration), Part 2 (Water Penetration), Part 3 (Wind Resistance; BS 6375 - Part 1 (Weather Resistance) or equivalent European Standards, whichever testing remains current; including permavents to design, minimum 5m3/hr/m2 at 50pa; fixings; damp proof courses, flashings, firm flashings and cills, movement joints, polyurethane foam fillers and sealants; to selected colour; window units to be sealed on all sides with suitable silicone sealant; all in accordance with Architect's drawings, specification and the relevant manufacturers written recommendations

- (EG1) 5No. Thermal paneled door; w:4200mm h:3040mm, 51mm thick; roll formed, hot dipped galvanised steel interior and exterior panels, minimum 0.48mm thick, embossed stucco finish; two coat baked on polyester paint; colour to be defined; CFC free polyurethane foamed in panel insulated core panels - 4nr section pass doors, thermal U-Value 1.2W/m2k; air infiltration class 2; uPVC thermal break EPDM seal, steel hinges, inset integral steel hinge mounting strip; EPDM compression weather strips to base and head; standard tiles fitting; post tensioned drums, chain hoist system; patent tumbler key lock; full track assembly, 87mm track additional central bracket supports; double thermal acrylic glazing panels, aluminium integrated sash section; 500mm x 500mm opes. - 4nr per door; all in accordance with Architect's drawings & specification and the relevant manufacturers written recommendations

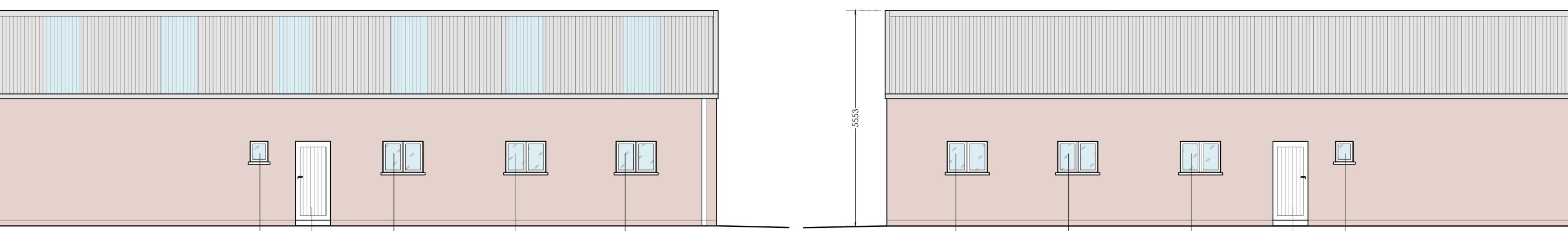
- (ED1) 5No. Single external glazed door and fanlight; overall opening (including frame) 950 x 2500mm high; fully glazed door, 950 x 2100mm; fully glazed fanlight, 950 x 400mm; high safety glazing to BS6262 to all glazed panes; UNIT 1 - 5 West Elevation
- Design, fabricate, supply and install selected proprietary modular thermally-broken Low 'E' Argon Double Glazed polyester powder coated (Syntha Pulvin) to BS 6496; 1997 & BS 4873; 2009 aluminium door system to selected RAL colour; to achieve minimum U Value of 1.5 W/m2k; sash restrictors 150mm to opening sashes; 36mm glazing - 6mm outer pane, 24mm argon filled cavity, (90/10 argon/air mix) 6mm inner pane; insulated coloured panel to match existing where appropriate; Glazing Kite Mark certified to BS EN 1279; Safety glass Kite Mark certified to BS EN 12150; high safety glazing to BS6262 to glazed door panes to regulations, to full pane if necessary; extruded aluminium profiles fabricated from alloy 6060 or 6063 to BS EN 755-9; 2008 system gaskets to be sealed with EDPM non-cellular elastomer compound to BS734; include for all necessary ironmongery to be brushed and stain ionised aluminium finish, fitted complete; include for all work necessary for fitting of units; screws to be zinc coated 1.4301 stainless steel, in accordance with DIN EN17440; including necessary opening sections as detailed on Architect's drawing; fixed in position with and including all necessary in glazing thermal broken passive ventilators as shown and in compliance with Technical Guidance Document "F"; certification to standards BS5368 - part 1 (Air Infiltration), Part 2 (Water Penetration), Part 3 (Wind Resistance; BS 6375 - Part 1 (Weather Resistance) or equivalent European Standards, whichever testing remains current; fixings; sealants to selected colour; window units to be sealed on all sides with suitable silicone sealant; all in accordance with Architect's drawings; including permavents to design, minimum 5m3/hr/m2 at 50pa; fixings; damp proof courses, flashings, firm flashings and cills, movement joints, polyurethane foam fillers and sealants; to selected colour; door units to be sealed on all sides with suitable silicone sealant; security level in accordance with PAS 24:2012; all in accordance with Architect's drawings and the relevant manufacturers written

- (ED2) 2No. Existing door - Single timber external door; overall opening (including frame) 950 x 2100mm high; solid timber door; UNIT 1 North Elevation and UNIT 5 South Elevation
 - (ED3) 5No. Existing door - Single timber external door and fanlight; overall opening (including frame) 950 x 2500mm high; solid timber door, 950 x 2100mm; fully glazed fanlight, 950 x 400mm; UNIT 1 to 5 East Elevation
- Check, fix as required, clean and re-paint existing door to selected colour with oil based external window/door paint

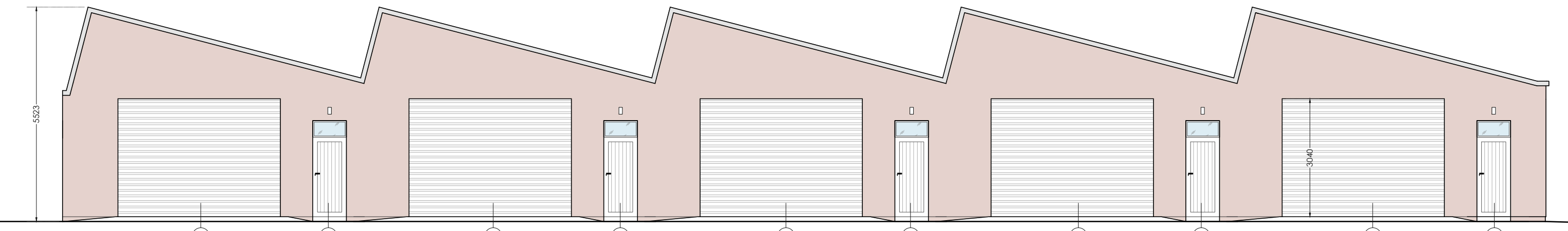
- (ID1) 15No. Internal door - overall opening (including frame) 900 x 2100mm high; UNIT 1 - 5
 - (ID2) 5No. Internal door - overall opening (including frame) 1000 x 2100mm high; UNIT 1 - 5
- All internal doors to be FD 30, three layer wood particleboard high performance door core conforming to BS EN 312-2 complete with oak veneer. Painted MDF architrave



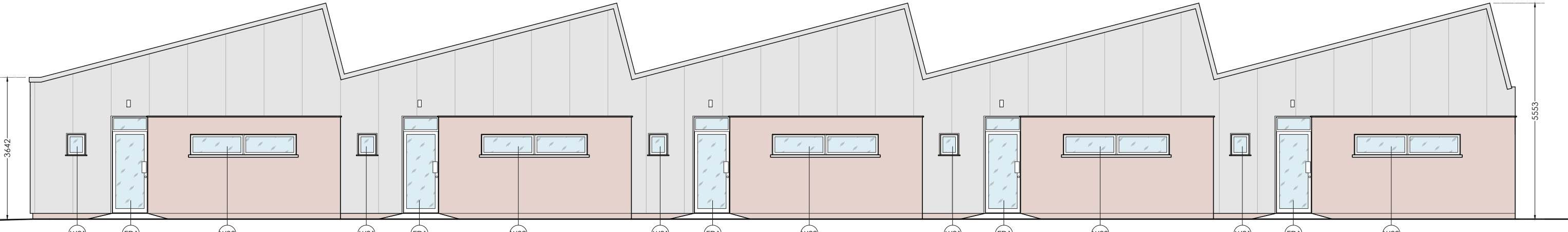
EXISTING GROUND FLOOR PLAN
SCALE 1:100



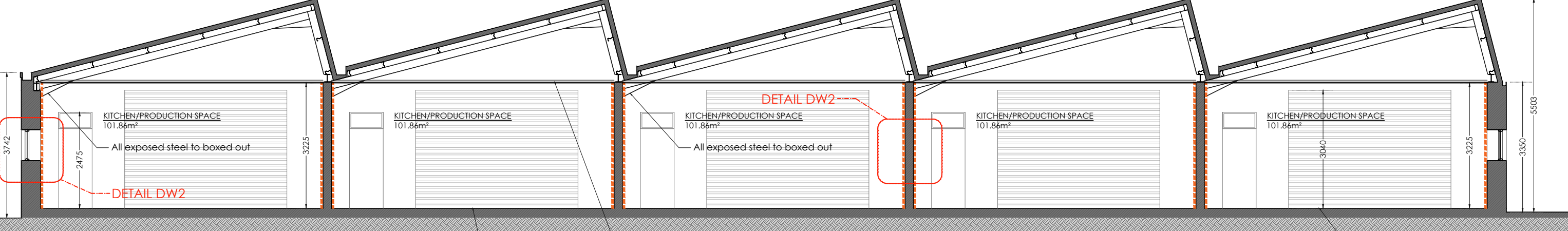
SIDE ELEVATION
SCALE 1:100



BACK ELEVATION
SCALE 1:100



FRONT ELEVATION
SCALE 1:100



SECTION A-A
SCALE 1:100

EXTERNAL FINISHES:
EXTERNAL RENDER: EXISTING SUBSTRATE SHOULD BE CLEAN, DRY, LOAD BEARING AND FREE OF LOOSE COATINGS, DIRT, GREASE OR DELETERIOUS MATERIALS ETC. SPATTERDASH KEY COAT REQUIRED IF HAND APPLIED AND ALKALI RESISTANT MESH CLOTH TO BE USED WHEN RENDERING OVER DISSIMILAR BACKGROUNDS. PREPARATION AS SET OUT IN EN 13914-1:2016, SECTION 7.5.

- MANUFACTURER: KILSARAN INTERNATIONAL OR EQUIVALENT; PRODUCT REFERENCE: KILSARAN GP RENDER OR EQUIVALENT.
- UNDERCOATS/LEVELLING COAT: PRODUCT REFERENCE: KILSARAN GP RENDER OR EQUIVALENT, CE MARKED RENDERING MORTAR WITH CAPILLARY WATER ABSORPTION CLASS OF W2, APPLIED IN ACCORDANCE WITH I.S. EN 13914-1:2016, EN1996, SR 325 AND MANUFACTURER'S INSTRUCTIONS; THICKNESS: 10MM, AND IN ACCORDANCE WITH I.S. EN 13914-1:2016, SECTION 6.18. FINISH: COMBED, TO RECEIVE 2ND UNDERCOAT.
- UNDERCOATS/LEVELLING COAT: PRODUCT REFERENCE: KILSARAN GP RENDER OR EQUIVALENT, CE MARKED RENDERING MORTAR WITH CAPILLARY WATER ABSORPTION CLASS OF W2, APPLIED IN ACCORDANCE WITH I.S. EN 13914-1:2016, EN1996, SR 325 AND MANUFACTURER'S INSTRUCTIONS; THICKNESS: 8MM, AND IN ACCORDANCE WITH I.S. EN 13914-1:2016, SECTION 6.18. CONSECUTIVE COATS TO BE NO THICKER THAN PREVIOUS COATS. FINISH: COMBED, TO RECEIVE FINISH COAT.
- FINAL COAT: PRODUCT REFERENCE: KILSARAN GP RENDER APPLIED IN ACCORDANCE WITH I.S. EN 13914-1:2016, EN1996, SR 325 AND MANUFACTURER'S INSTRUCTIONS; THICKNESS: 10MM, AND IN ACCORDANCE WITH I.S. EN 13914-1:2016, SECTION 6.18. CONSECUTIVE COATS TO BE NO THICKER THAN PREVIOUS COATS. FINISH: SMOOTH AS PER ARCHITECTS/DESIGNERS INSTRUCTIONS.

INTERNAL FINISHES:
KITCHEN/PRODUCTION SPACE FLOORS: VINYL SAFETY FLOORING, TO IS EN 14041; 3.5MM THICK, TO IS EN 24346; WEIGHT 3.1KG/M2 TO BS EN 23997; SHEET WIDTH 2000MM, TO IS EN 24341, R11 SLIP RESISTANCE TO DIN 51130, E5F TO EN 13845 ANNEX C AND IS EN 13893, SURFACE ROUGHNESS OVER 20 MICRONS, TO IS NE 24343-1; PUR PEARL OR EQUIVALENT SURFACE FINISH: COLOUR - TO BE SELECTED BY ARCHITECT; JOINTS HOT WELDED 3.5MM; SHEETS LAID WITH AND INCLUDING ADHESIVE ON AND INCLUDING CORKMANT UNDERLAY (GRANULATED CORK, LNSEED NATURAL ROSIN AND LIMESTONE ON JUST BACKING), DENSITY 0.60 - 0.70G/CM3; LAID IN ACCORDANCE WITH SD SAFETY SHEET 91/155/FEC AND ISO 11014-1; ALL APPLIED TO MANUFACTURERS RECOMMENDATIONS;

WALLS: ANTIMICROBIAL SHEET PANNELLING; RIGID POLYVINYL CHLORIDE HOMOPOLYMER; TO MEET SI 454 AND 805 (FOOD HYGIENE); SATIN FINISH; 2.5MM THICK PANELS, WEIGHT 3.5KG/M2; FIRE RATED TO EN 13501 B-S3-DO AND BS 476 CLASS 1/0; HOT WELDED JOINTS; THERMOFORMED INTERNAL AND EXTERNAL CORNERS TO MANUFACTURER'S INSTRUCTIONS; FIXED TO PLYWOOD, POLYURETHANE ADHESIVE, 2KG/M2

CEILING: SUSPENDED CEILING TILE SYSTEM; CONCEALED GRID SYSTEM; TO IS EN 13964; HIGH DENSITY RESIN BONDED GLASS WOOL (80% RECYCLED RESIN FACED FOR CLEAN WET WIPING; CLASS A2-S.D0 TO IS EN 13501-1; 20MM THICK; 3-4KG/M2 APPROXIMATE WEIGHT; 600 X 600MM TILE SIZES; GALVANISED STEEL CONNECT GRID TYPE AND MAIN RUNNER, WHITE COLOUR; CONNECT SUPPORT CLIP; GROUNDED TO EXISTING PROFILE METAL DECK SOFFIT; METAL STRAP HANGER; SHOT FIXED TO INSTRUCTION; ABSORPTION CLASS A, TESTED TO 70% RELATIVE HUMIDITY, TO IS EN 13964; COLOUR / FINISH WHITE; ALLOW FOR 3NO. 900x1800MM OPAQUE DIFFUSER PANELS IN EACH UNIT.

SKIRTINGS: GIRTH NOT EXCEEDING 150MM WIDE; VINYL SAFETY COVED SKIRTING; COVE FORMER, EXTRUDED UPVC FLEXIBLE PROFILE; 250MM INTERNAL RADIUS, FIXED TO GROUND TO MANUFACTURER'S SPECIFICATION; FOR USE WITH VINYL FLOORINGS; COLOUR BLACK; DRESSING AND CUTTING TO VINYL SHEET; 20MM THICK; MITRED CORNERS IN RUNNING LENGTH; BONDING WITH ADHESIVE, TO MANUFACTURERS INSTRUCTION; ALL TREATMENTS AND CLEANING

STAFF ROOM/HALL/STORE FLOORS: VINYL SAFETY FLOORING, TO IS EN 14041; 3MM THICK, TO IS EN 24346; WEIGHT 2.9KG/M2 TO IS EN 23997; SHEET WIDTH 2000MM, TO IS EN 24341, R11 SLIP RESISTANCE TO DIN 51130, E5F TO EN 13845 ANNEX C AND IS EN 13893, SURFACE ROUGHNESS OVER 20 MICRONS, TO IS NE 24343-1; PUR PEARL OR EQUIVALENT SURFACE FINISH: COLOUR - TO BE SELECTED BY ARCHITECT; JOINTS HOT WELDED 3.5MM; SHEETS LAID WITH AND INCLUDING ADHESIVE ON AND INCLUDING CORKMANT UNDERLAY (GRANULATED CORK, LNSEED NATURAL ROSIN AND LIMESTONE ON JUST BACKING), DENSITY 0.60 - 0.70G/CM3; LAID IN ACCORDANCE WITH SD SAFETY SHEET 91/155/FEC AND ISO 11014-1; ALL APPLIED TO MANUFACTURERS RECOMMENDATIONS;

WALLS: PAINTING, TO IS EN 4618:2014; VINYL SILK MATT EMULSION, APPLIED TO CLEAN BASE, FILL HOLES (TO BE EXAMINED EXTENSIVELY ON INTERNAL TRADE REFERENCE; ONE COAT SEALER; TWO COATS FINAL COAT TRADE PAINT FOR FINISHING COATS; SELECTED SHADE / COLOUR TO ARCHITECTS SELECTION;

CEILING: SUSPENDED CEILING TILE SYSTEM; CONCEALED GRID SYSTEM; TO IS EN 13964; HIGH DENSITY RESIN BONDED GLASS WOOL (80% RECYCLED RESIN FACED FOR CLEAN WET WIPING; CLASS A2-S.D0 TO IS EN 13501-1; 20MM THICK; 3-4KG/M2 APPROXIMATE WEIGHT; 600 X 600MM TILE SIZES; GALVANISED STEEL CONNECT GRID TYPE AND MAIN RUNNER, WHITE COLOUR; CONNECT SUPPORT CLIP; GROUNDED TO EXISTING PROFILE METAL DECK SOFFIT; METAL STRAP HANGER; SHOT FIXED TO INSTRUCTION; ABSORPTION CLASS A, TESTED TO 70% RELATIVE HUMIDITY, TO IS EN 13964; COLOUR / FINISH WHITE;

SKIRTINGS: GIRTH NOT EXCEEDING 150MM WIDE; VINYL SAFETY COVED SKIRTING; COVE FORMER, EXTRUDED UPVC FLEXIBLE PROFILE; 250MM INTERNAL RADIUS, FIXED TO GROUND TO MANUFACTURER'S SPECIFICATION; FOR USE WITH VINYL FLOORINGS; COLOUR BLACK; DRESSING AND CUTTING TO VINYL SHEET; 20MM THICK; MITRED CORNERS IN RUNNING LENGTH; BONDING WITH ADHESIVE, TO MANUFACTURERS INSTRUCTION; ALL TREATMENTS AND CLEANING

STAFF ROOM/HALL/STORE FLOORS: VINYL SAFETY FLOORING, TO IS EN 14041; 3MM THICK, TO IS EN 24346; WEIGHT 2.9KG/M2 TO IS EN 23997; SHEET WIDTH 2000MM, TO IS EN 24341, R11 SLIP RESISTANCE TO DIN 51130, E5F TO EN 13845 ANNEX C AND IS EN 13893, SURFACE ROUGHNESS OVER 20 MICRONS, TO IS NE 24343-1; PUR PEARL OR EQUIVALENT SURFACE FINISH: COLOUR - TO BE SELECTED BY ARCHITECT; JOINTS HOT WELDED 3.5MM; SHEETS LAID WITH AND INCLUDING ADHESIVE ON AND INCLUDING CORKMANT UNDERLAY (GRANULATED CORK, LNSEED NATURAL ROSIN AND LIMESTONE ON JUST BACKING), DENSITY 0.60 - 0.70G/CM3; LAID IN ACCORDANCE WITH SD SAFETY SHEET 91/155/FEC AND ISO 11014-1; ALL APPLIED TO MANUFACTURERS RECOMMENDATIONS;

WALLS: PAINTING, TO IS EN 4618:2014; VINYL SILK MATT EMULSION, APPLIED TO CLEAN BASE, FILL HOLES (TO BE EXAMINED EXTENSIVELY ON INTERNAL TRADE REFERENCE; ONE COAT SEALER; TWO COATS FINAL COAT TRADE PAINT FOR FINISHING COATS; SELECTED SHADE / COLOUR TO ARCHITECTS SELECTION;

CEILING: SUSPENDED CEILING TILE SYSTEM; CONCEALED GRID SYSTEM; TO IS EN 13964; HIGH DENSITY RESIN BONDED GLASS WOOL (80% RECYCLED RESIN FACED FOR CLEAN WET WIPING; CLASS A2-S.D0 TO IS EN 13501-1; 20MM THICK; 3-4KG/M2 APPROXIMATE WEIGHT; 600 X 600MM TILE SIZES; GALVANISED STEEL CONNECT GRID TYPE AND MAIN RUNNER, WHITE COLOUR; CONNECT SUPPORT CLIP; GROUNDED TO EXISTING PROFILE METAL DECK SOFFIT; METAL STRAP HANGER; SHOT FIXED TO INSTRUCTION; ABSORPTION CLASS A, TESTED TO 70% RELATIVE HUMIDITY, TO IS EN 13964; COLOUR / FINISH WHITE;

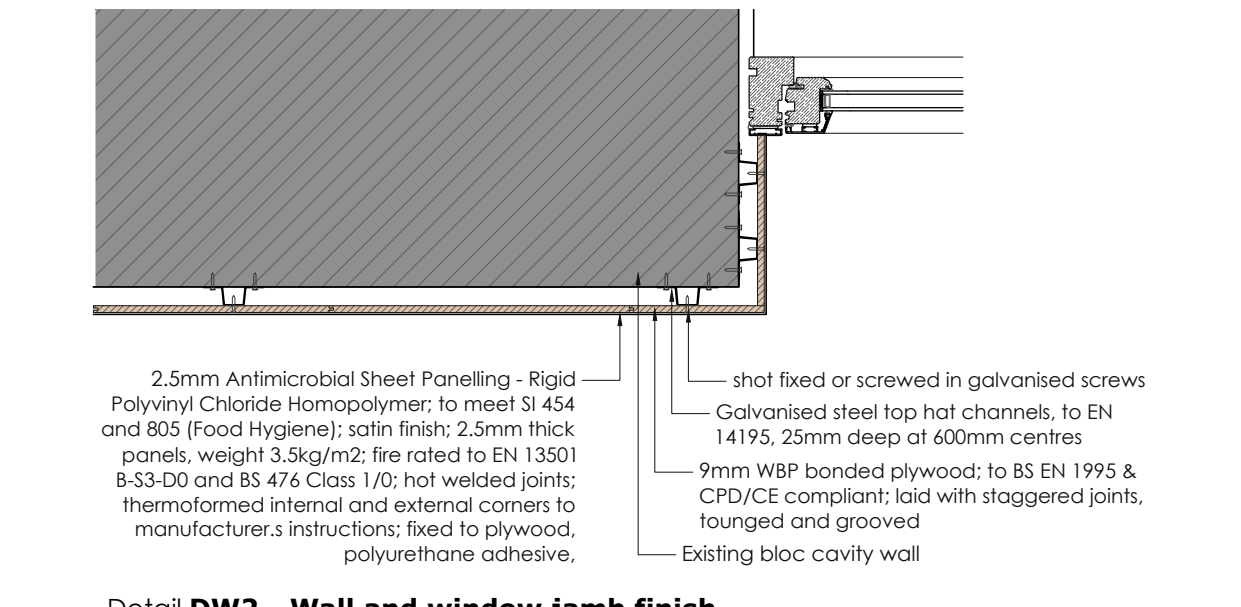
SKIRTINGS: GIRTH NOT EXCEEDING 150MM WIDE; VINYL SAFETY COVED SKIRTING; COVE FORMER, EXTRUDED UPVC FLEXIBLE PROFILE; 250MM INTERNAL RADIUS, FIXED TO GROUND TO MANUFACTURER'S SPECIFICATION; FOR USE WITH VINYL FLOORINGS; COLOUR BLACK; DRESSING AND CUTTING TO VINYL SHEET; 20MM THICK; MITRED CORNERS IN RUNNING LENGTH; BONDING WITH ADHESIVE, TO MANUFACTURERS INSTRUCTION; ALL TREATMENTS AND CLEANING

BATHROOM FLOORS: VINYL SAFETY FLOORING, TO IS EN 14041; 3.5MM THICK, TO IS EN 24346; WEIGHT 3.1KG/M2 TO BS EN 23997; SHEET WIDTH 2000MM, TO IS EN 24341, R11 SLIP RESISTANCE TO DIN 51130, E5F TO EN 13845 ANNEX C AND IS EN 13893, SURFACE ROUGHNESS OVER 20 MICRONS, TO IS NE 24343-1; PUR PEARL OR EQUIVALENT SURFACE FINISH: COLOUR - TO BE SELECTED BY ARCHITECT; JOINTS HOT WELDED 3.5MM; SHEETS LAID WITH AND INCLUDING ADHESIVE ON AND INCLUDING CORKMANT UNDERLAY (GRANULATED CORK, LNSEED NATURAL ROSIN AND LIMESTONE ON JUST BACKING), DENSITY 0.60 - 0.70G/CM3; LAID IN ACCORDANCE WITH SD SAFETY SHEET 91/155/FEC AND ISO 11014-1; ALL APPLIED TO MANUFACTURERS RECOMMENDATIONS;

WALLS: PAINTING, TO IS EN 4618:2014; VINYL SILK MATT EMULSION, APPLIED TO CLEAN BASE, FILL HOLES (TO BE EXAMINED EXTENSIVELY ON INTERNAL TRADE REFERENCE; ONE COAT SEALER; TWO COATS FINAL COAT TRADE PAINT FOR FINISHING COATS; SELECTED SHADE / COLOUR TO ARCHITECTS SELECTION;

CEILING: SUSPENDED CEILING TILE SYSTEM; CONCEALED GRID SYSTEM; TO IS EN 13964; HIGH DENSITY RESIN BONDED GLASS WOOL (80% RECYCLED RESIN FACED FOR CLEAN WET WIPING; CLASS A2-S.D0 TO IS EN 13501-1; 20MM THICK; 3-4KG/M2 APPROXIMATE WEIGHT; 600 X 600MM TILE SIZES; GALVANISED STEEL CONNECT GRID TYPE AND MAIN RUNNER, WHITE COLOUR; CONNECT SUPPORT CLIP; GROUNDED TO EXISTING PROFILE METAL DECK SOFFIT; METAL STRAP HANGER; SHOT FIXED TO INSTRUCTION; ABSORPTION CLASS A, TESTED TO 70% RELATIVE HUMIDITY, TO IS EN 13964; COLOUR / FINISH WHITE;

SKIRTINGS: GIRTH NOT EXCEEDING 150MM WIDE; VINYL SAFETY COVED SKIRTING; COVE FORMER, EXTRUDED UPVC FLEXIBLE PROFILE; 250MM INTERNAL RADIUS, FIXED TO GROUND TO MANUFACTURER'S SPECIFICATION; FOR USE WITH VINYL FLOORINGS; COLOUR BLACK; DRESSING AND CUTTING TO VINYL SHEET; 20MM THICK; MITRED CORNERS IN RUNNING LENGTH; BONDING WITH ADHESIVE, TO MANUFACTURERS INSTRUCTION; ALL TREATMENTS AND CLEANING



Detail DW2 - Wall and window jamb finish
Scale 1:10

craftstudio architecture
Avelmore House, 4 Hill Street, Monaghan
T +353 (0) 47 82036 E info@craftstudio.ie W www.craftstudio.ie

Project: Enterprise Centre Premises

Client: Ballybay Enterprise Centre

Address: Carrickmacross Rd. Ballybay, Co. Monaghan

Drawing Title: Proposed drawings DRAFT DRAWINGS

Scale: as noted Date: 03 May 2019

Revision: 0 Project Stage: Tender

Sheet: 1 of 1 File Name: 01 TD 19-22